

Megohmmeter MXS1000



- ▶ Insulation resistance from 50k Ω up to 200G Ω (2 T Ω in option)
- ▶ DC voltage up to 1000 VDC (1V steps)
- ▶ 50 parameter sets storage
- ▶ Built in RS232C interface and good/bad contact
- ▶ ETHERNET, PLC or IEEE488-2 interfaces in option

The MXS1000 megohmmeter is the right answer to the requirement of the VDE, UL, CSA standards and to the main EN European standards involved in the LOW VOLTAGE DIRECTIVE (LVD).

The MXS1000 is a megohmmeter with high accuracy dedicated as well for test laboratories as for production.

IEC1010, IEC335, IEC950, IEC598, IEC601, IEC204, IEC558, IEC065, IEC215, IEC646, IEC730, ... standards

Technical Characteristics

MEGOHMMETER FUNCTION

Measurement range

- 50k Ω to 200G Ω (2T Ω in option with ref. XS-20)
- The maximum insulation resistance is given by (U_{TEST}/U_{Max}) x 200G Ω

Accuracy

- $\pm (1.5\% + 1U)$
- Display : 2000 digits

Threshold

- Low limit and High limit (making specimen under test detection possible) adjustable from 50k Ω to 200G Ω (2T Ω in option with ref. XS-20)

Measurement voltage

Adjustable by 1V DC step from :

- 20 to 1000V DC
- Accuracy : $\pm (1\% + 2V)$
- Short circuit : $\leq 2\text{mA DC}$

Measurement time

- Rise, hold and fall time adjustment from 0 to 999 sec. or permanent

Storage

- 10 test parameter (voltage, time, threshold...) sets can be stored

PROTECTIONS

Instrument

- By slow blow fuse

Operator

- No HV or current on the outputs as long as the safety interlock is open
- Red green lamp to indicate HV presence
- Double safety loop which can be used with safety bloc devices

MEGOHMMETER

General Characteristics

Presentation

- Table top unit
- Metal case

Dimensions

- Height : 131mm
- Width : 440mm
- Depth : 450mm

Weight

- 9 kg

Power

- 230V or 115V \pm 15% single phase, from 47 to 63Hz
- Consumption : 40 to 70 VA depending on the use

Operating temperature

- 0°C to +45°C

Storage temperature

- -10°C to +60°C

Over-voltage category

- CAT II

Pollution degree

- 2

Safety class

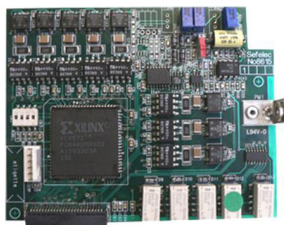
- Class I (earth connection)

Options

XS-02

PLC interface

- START contact
- PASS and FAIL contacts
- FAULT contact
- END OF TEST contact



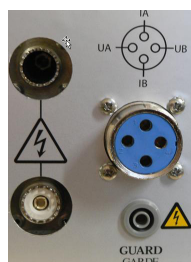
XS-03

0-10 Volts input and output

- 0-10V input to control the high voltage
- 0-10V output for the voltage and the current

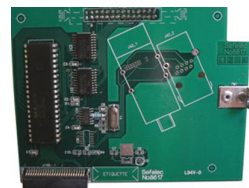
XS-05

Disconnectable rear panel outputs



XS-06

IEEE488-2 (Talker - Listener) interface



XS-19

Extension to 30 memories per function instead of the 10 by default

XS-22

Resistance displayed in M Ω x km

XS-20

Extension of the range up to 2 Tohm

XS-100

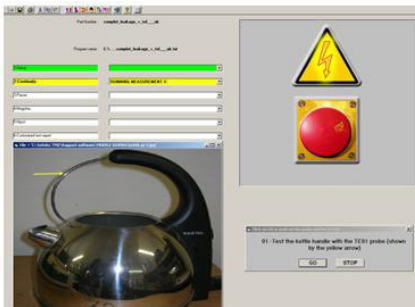
Ethernet interface

Options

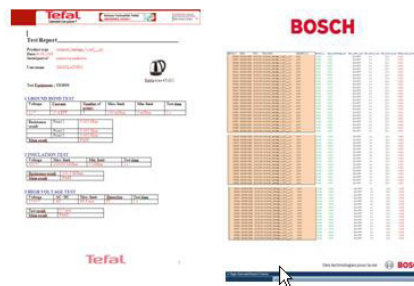
SOFTWARE

XS-96

Interactive SXSPRO software (English, French, Spanish, German) to fully control the test process (lot management, user team management, bar code reader, data base connexions (MS Access), traceability (MS Excel, MS Word), reporting (MS Word), image and sounds management for optimal communication with user)



MS Word report example



MS Excel tracability report example

Available accessories

TE56

High voltage test probe



C0175

Black ground return lead (does not need to be order with purchase of new instrument)

- ▶ Starting :UHF connector
- ▶ Ending : 4 mm banana plug
- ▶ Length : 2 meters



C0160-xx

Red-green lamp to indicate the high voltage presence



A010-XS

Two user hands occupied with safety user buttons



A011-XS

Remote control foot switch



KRXS

19" rack mounting adaptation

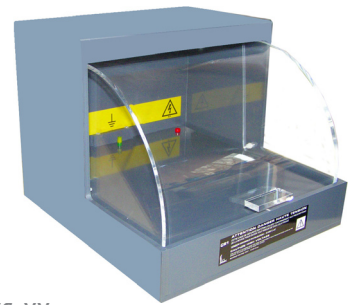


SAFETY CAGE

Security chamber 15kV, with or without adaptation cable. HV and ground outputs on 4mm banana sockets on the inside of the cage

CS1+CS-10-XS-XX

- h220 x w380 x d320, 15kg



CS2+CS-10-XS-XX

- h300 x w500 x d600, 70kg



CS3+CS-10-XS-XX

- h300 x w1000 x d600, 100kg



Calibration

REMA0 to REMA8

- High value standard resistor, to select from 1MΩ up to 1TΩ



C058

- Cable to connect REMA standard resistor



XS-91-3

- Calibration kit

The Sefelec Advantages

QUALITY

As well for test laboratories as for production lines, the XS series has one of the best specifications and accuracy on the market, in addition to the fact it can work 24 hours a day.

USER SAFETY

The XS series is the only device of this type on the market to be equipped with a double hardware safety loop, conform to the famous IEC 204 standard. It insures an optimal user safety, while manipulating an equipment that can give death.

TIME / MONEY SAVINGS

With its fastness in testing and detecting, the XS series lets you reduce costs in production.

Also, our range of switching matrix lets you automatize your production processes and limit human mistakes, human risks towards high voltage, improve fastness, production times, with automatic traceability.

TRACEABILITY

With its wide range of interfaces and interactive software, traceability to databases and reporting becomes standard and easy to use.

TEST GUARANTEE & CALIBRATION

This is essential to start a day of production being sure your tester can detect good/bad D.U.T. properly. Our range of dummy boxes is made for this : they will simulate you can indeed detect good or bad products.

Calibration is recommended once a year and with our calibration boxes, it becomes easy and there is no need anymore to send the unit back for calibration : you save money (shipment, calibration cost), time (travel time, calibration time, you choose the optimal period for the calibration so it does not affect your production process), you limit the risk of damages during transportation.

